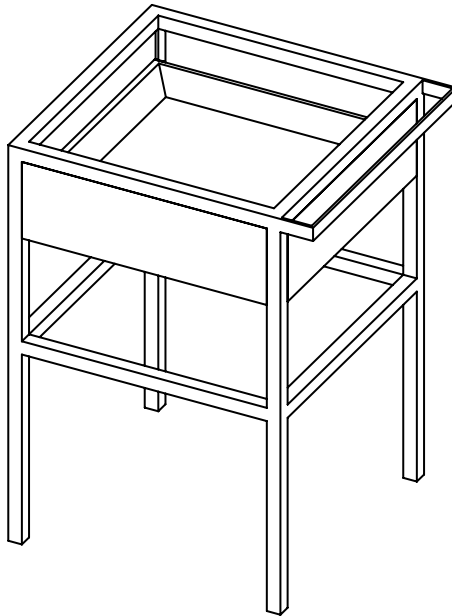


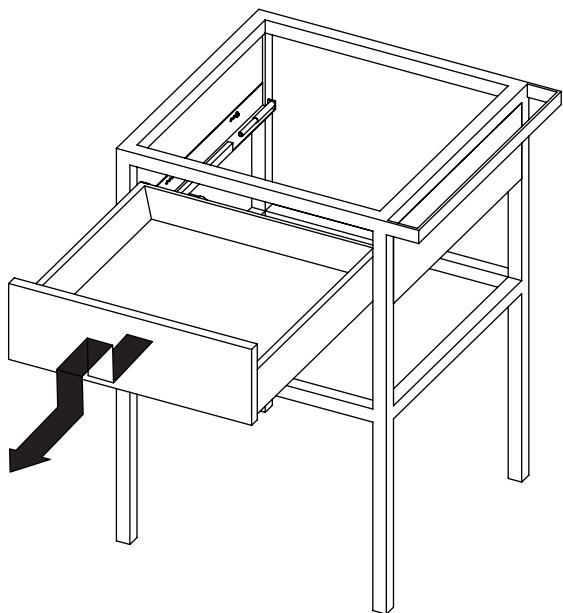
PL INSTRUKCJA ODWRÓCENIA SZUFLADY

EN DRAWER POSITION CHANGE

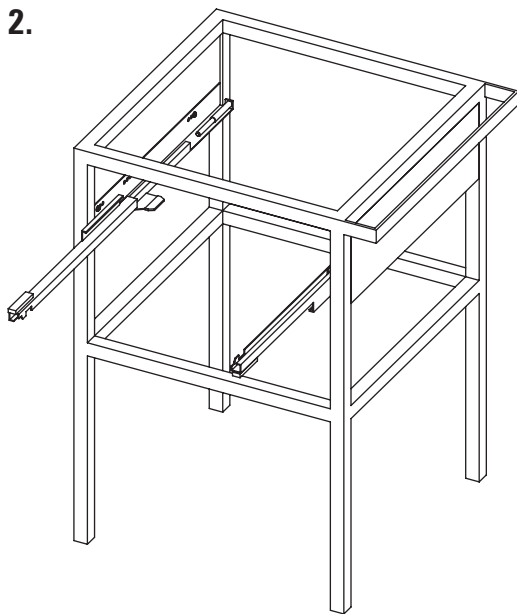
RU ИНСТРУКЦИЯ ПО ПЕРЕВОРАЧИВАНИЮ ПОЛКИ



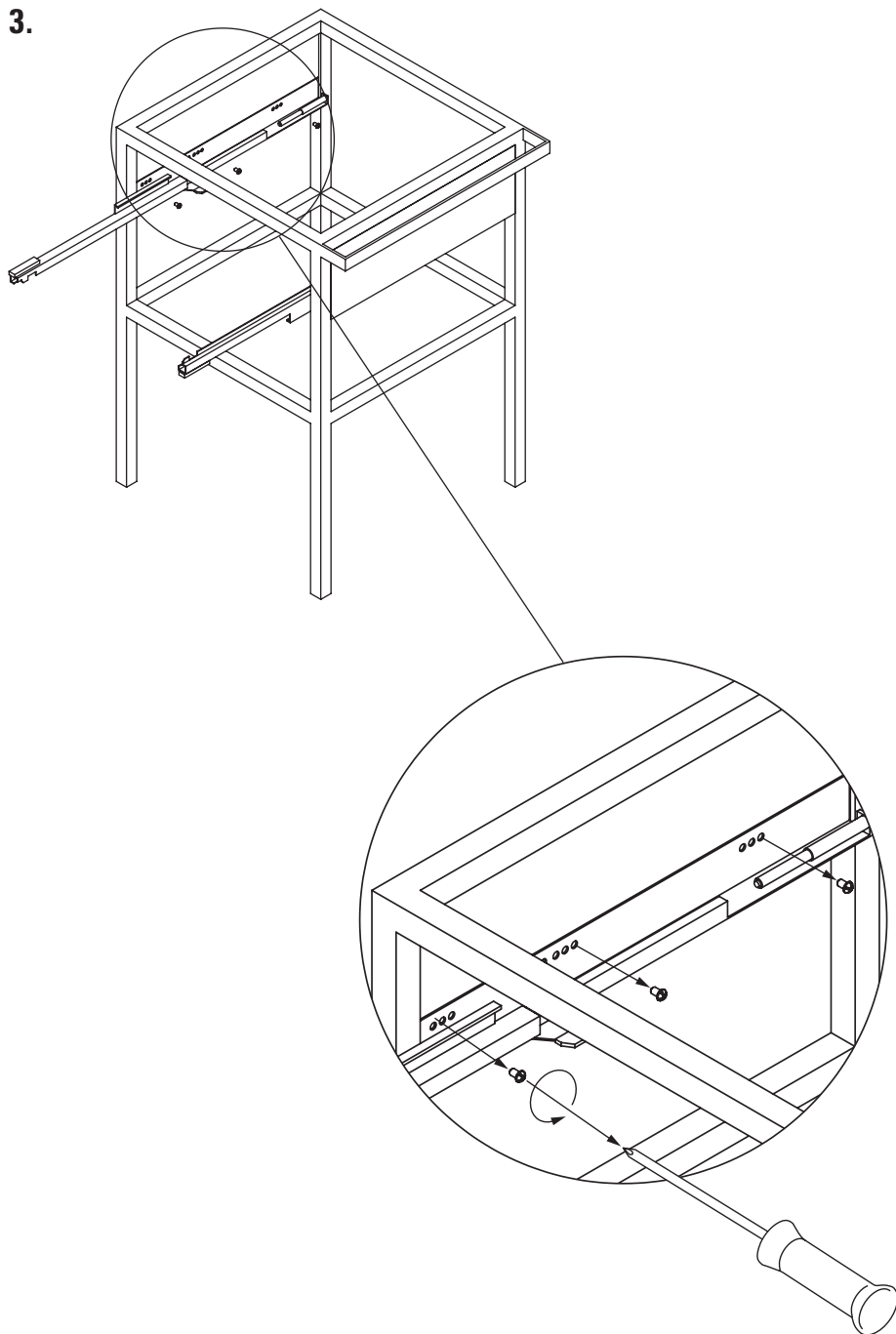
1.



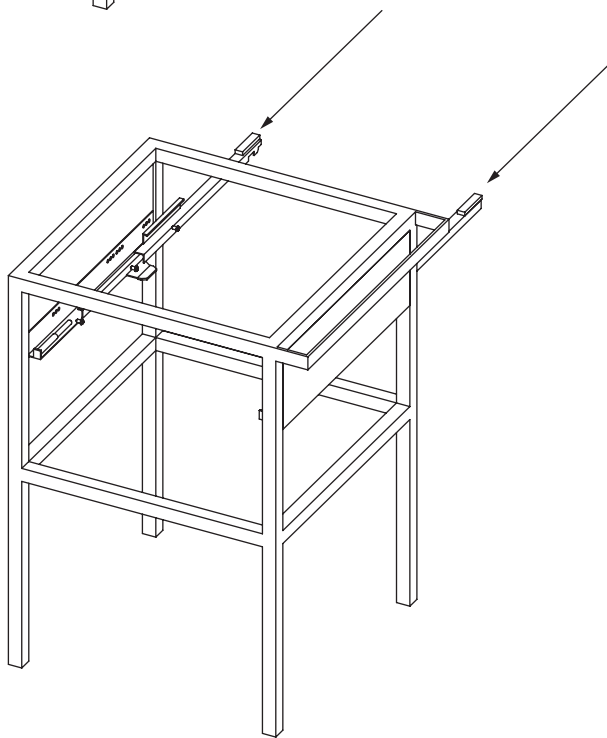
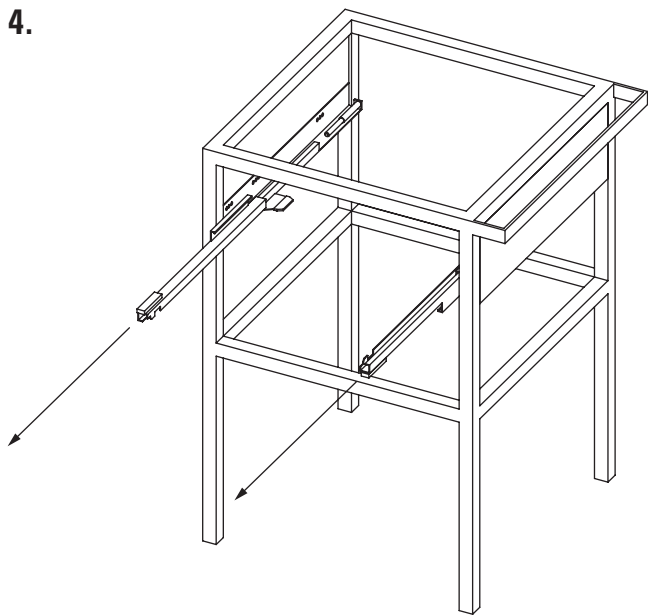
2.



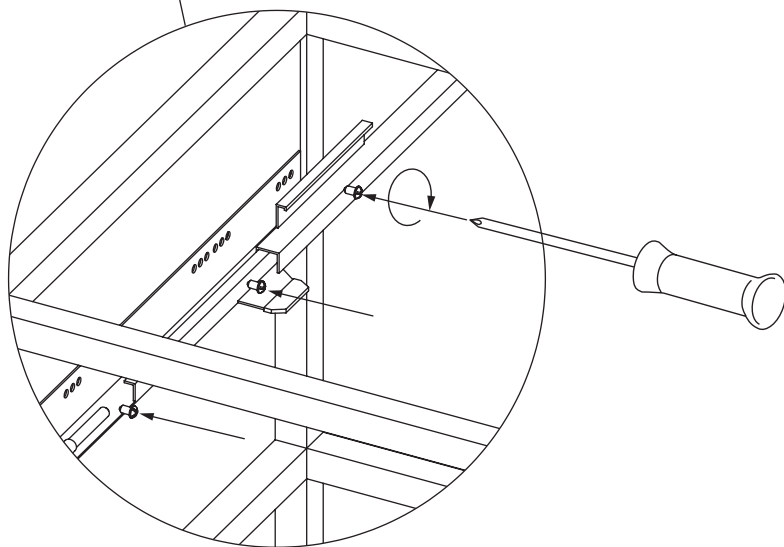
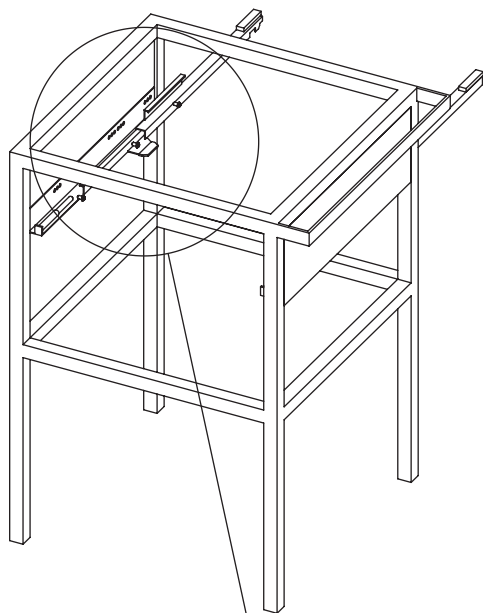
3.



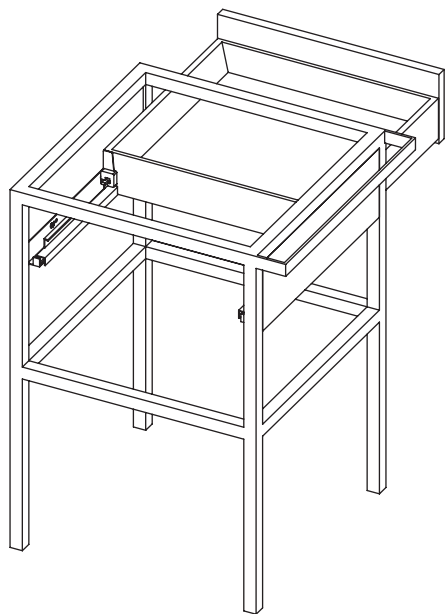
4.



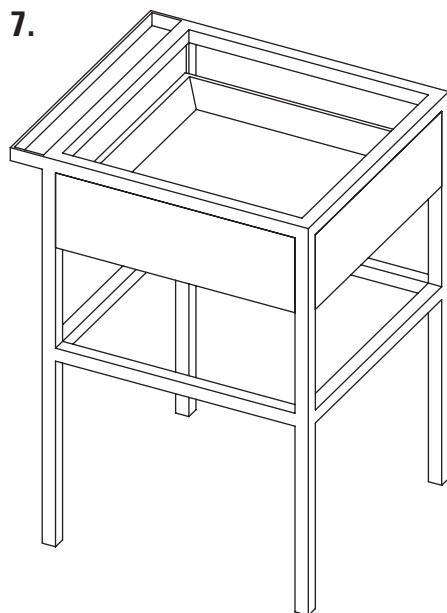
5.



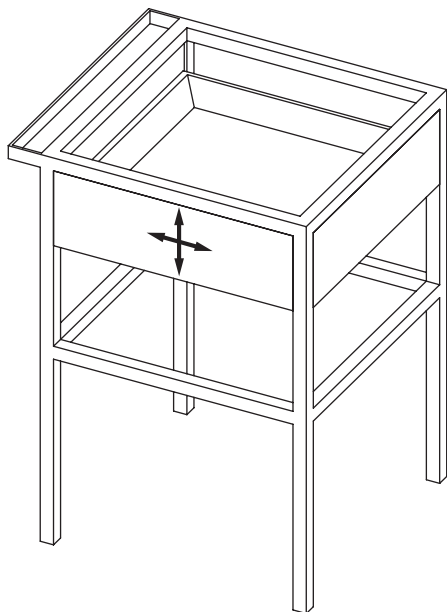
6.



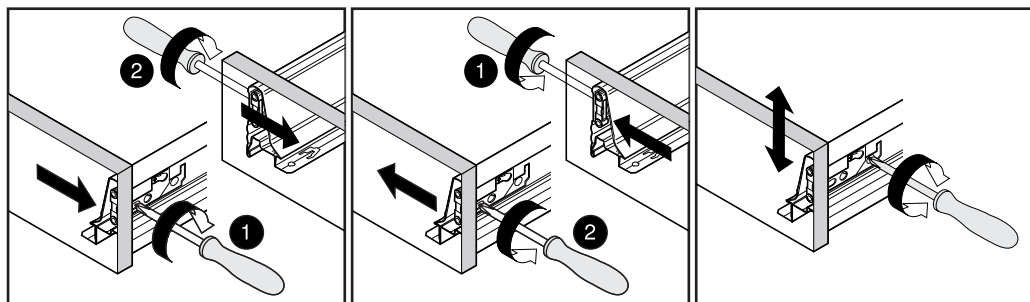
7.



8.



REGULACJA / ADJUSTMENT / РЕГУЛИРОВКА



1 mm

1 mm

± 2 mm

