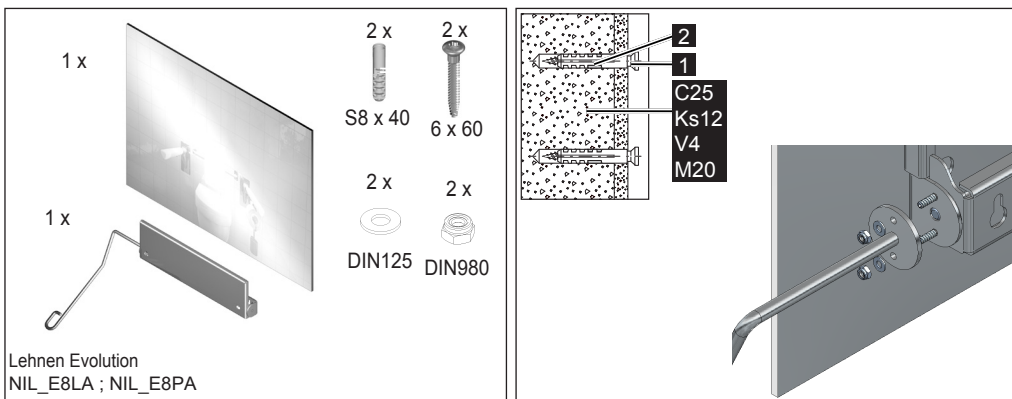


## Montage- und Gebrauchsanweisung / Operating and assembly instructions Instrukcja montażu i użytkowania

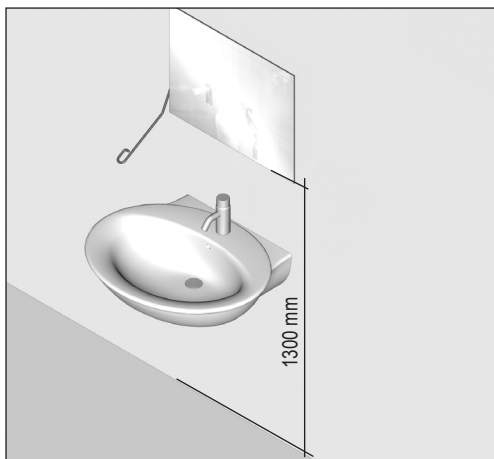
Lehnen Evolution NIL\_E8LA ; NIL\_E8PA



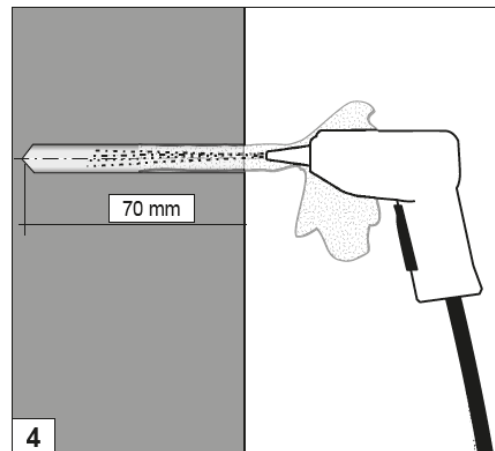
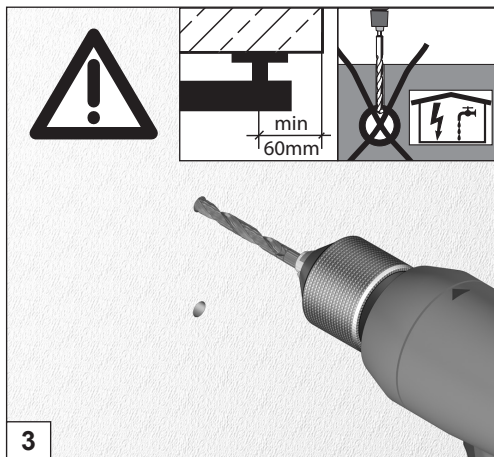
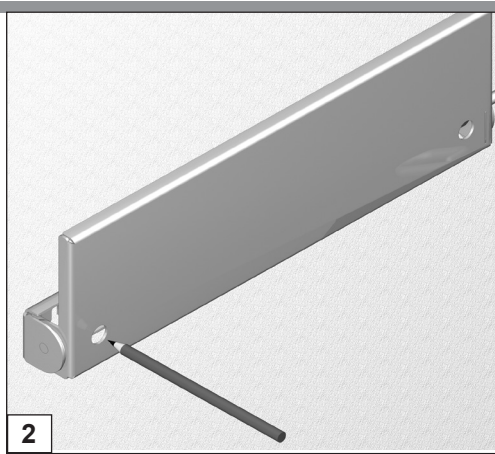
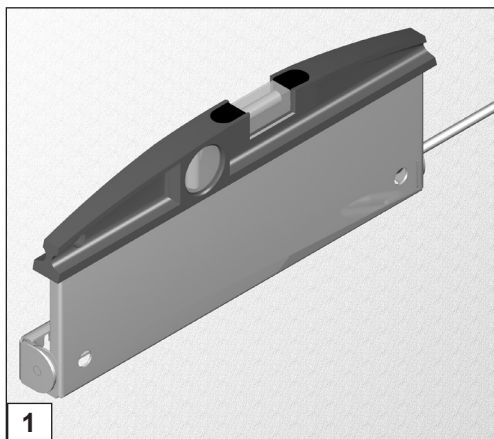
### 1. Stückliste / Parts list / Wykaz części

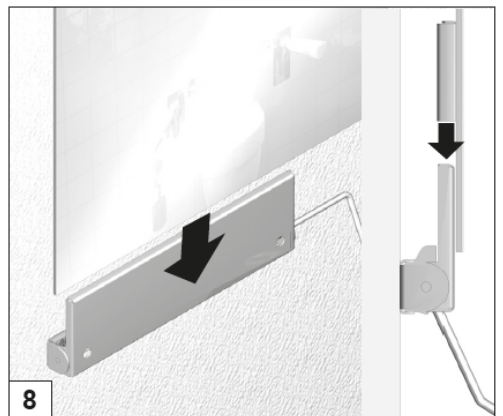
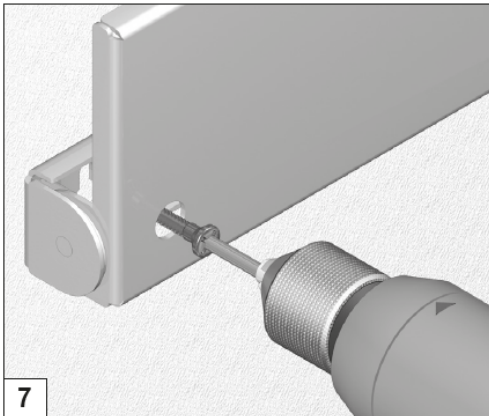
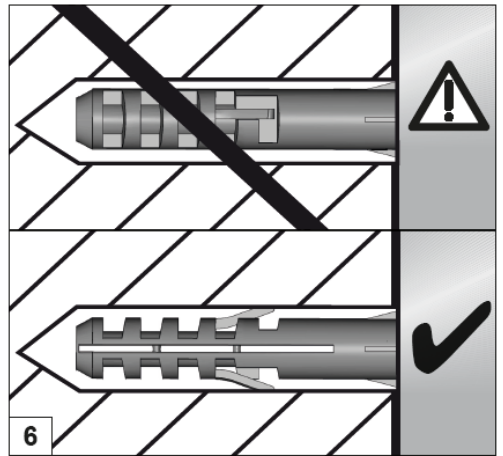
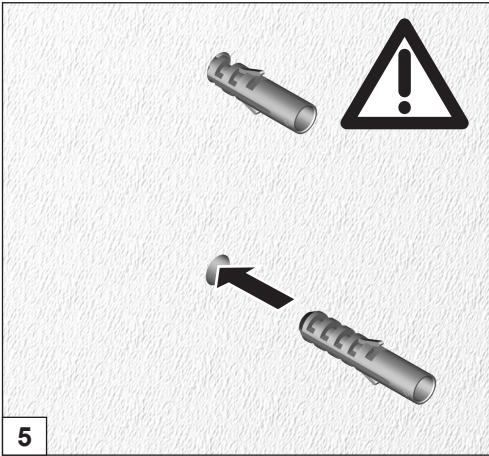


## 2. Planungshilfe / Planning aids / wskazówki montażowe

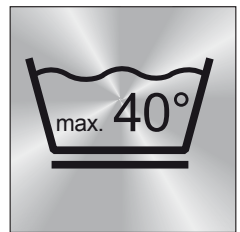
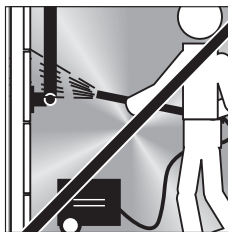
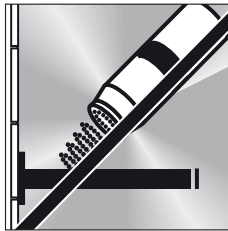
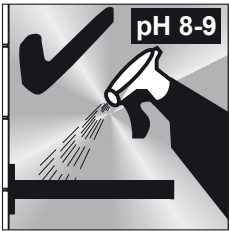


## 3. Montage / Installation mounting / Montaż





#### 4. Pflege und Reinigung / Cleaning and care / Konserwacja i czyszczenie



Rev. 0 / 05.02.2024

Lehen GmbH / Kleinicher Straße 10 / 54472 Longkamp / Germany / Tel.: 06531 - 500 57-0 / Fax: 06531 - 500 57-1022 / www.lehen.de